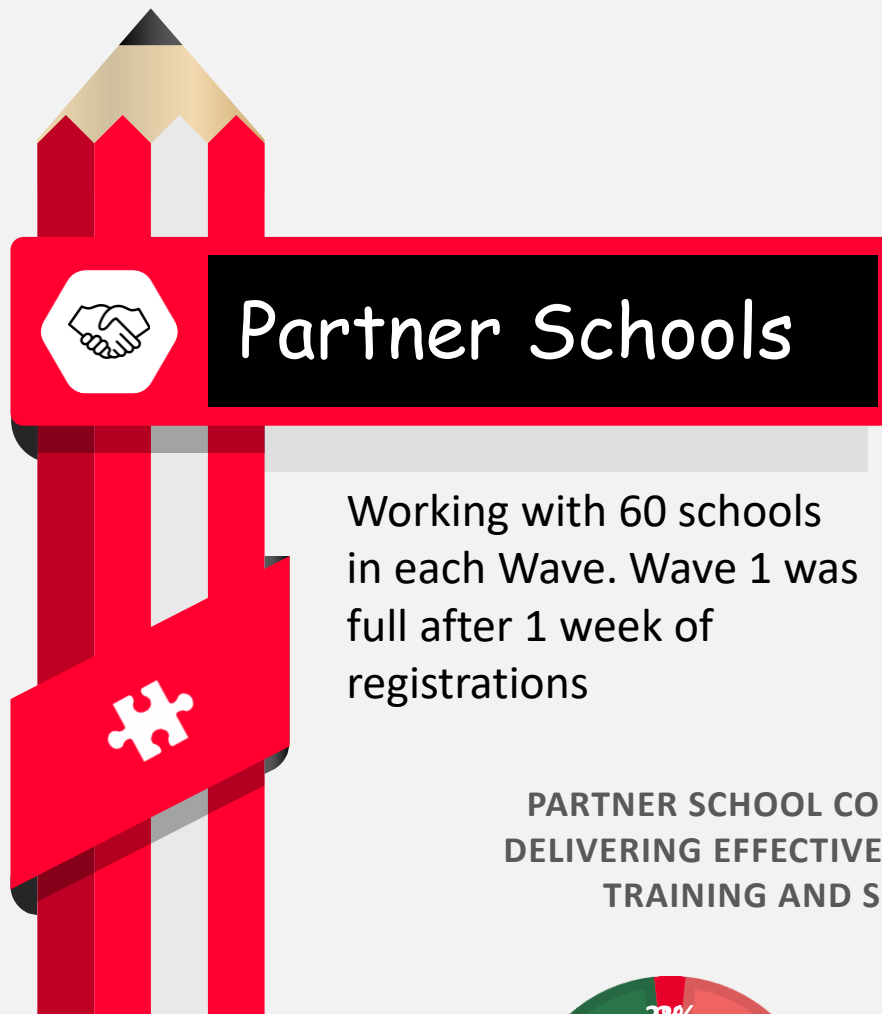


112 Sign ups

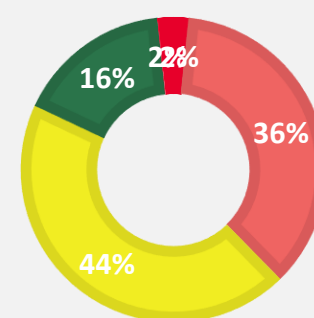
From Secondary Schools in England
63 schools attended the PSHE Network Meeting with some signing up for the 'Leading in PSHE' course for May 2021



Partner Schools

Working with 60 schools in each Wave. Wave 1 was full after 1 week of registrations

PARTNER SCHOOL CONFIDENCE IN DELIVERING EFFECTIVE RSHE BEFORE TRAINING AND SUPPORT



- Total expert
- Fairly high levels
- Some
- Very little
- None

Teaching Schools South West RSHE Ready

Mentors



Mentor team includes SEND specialist and staff working in faith schools.

10

Mentors trained and working

Mentors will have 7 hours of training including specialist training with Brook

89 staff Registered for the first webinar

Before the webinar, 62% rated their confidence in teaching about mental wellbeing as fair or high. After the webinar 88% rated confidence as fair or high



Website and Media

101 followers on Twitter, 46 members of the closed Facebook group, 30 collaborators on shared Google drive and new website launched

Webinar Schedule - Wave 1

A	Introduction to modules, principles of good practice, creating a safe learning environment and Mental wellbeing
B	Intimate and sexual relationships (including sexual health) and Changing adolescent body
C	Basic first aid and Drugs alcohol & tobacco
D	Respectful relationships (including friendships) and Online relationships / Online & media
E	Physical health & fitness, Healthy eating and Health & prevention
F	Being safe and Internet safety & harms and Families (& people who care for me)

Friday 26th June 11.30
Friday 3rd July 11.30
Friday 10th July 11.30
Friday 17th July 11.30
Thursday 10th September 11.30
Thursday 17th September 11.30

- www.rsheready.co.uk
- info@rsheready.co.uk
- [@rsheready](https://twitter.com/rsheready)